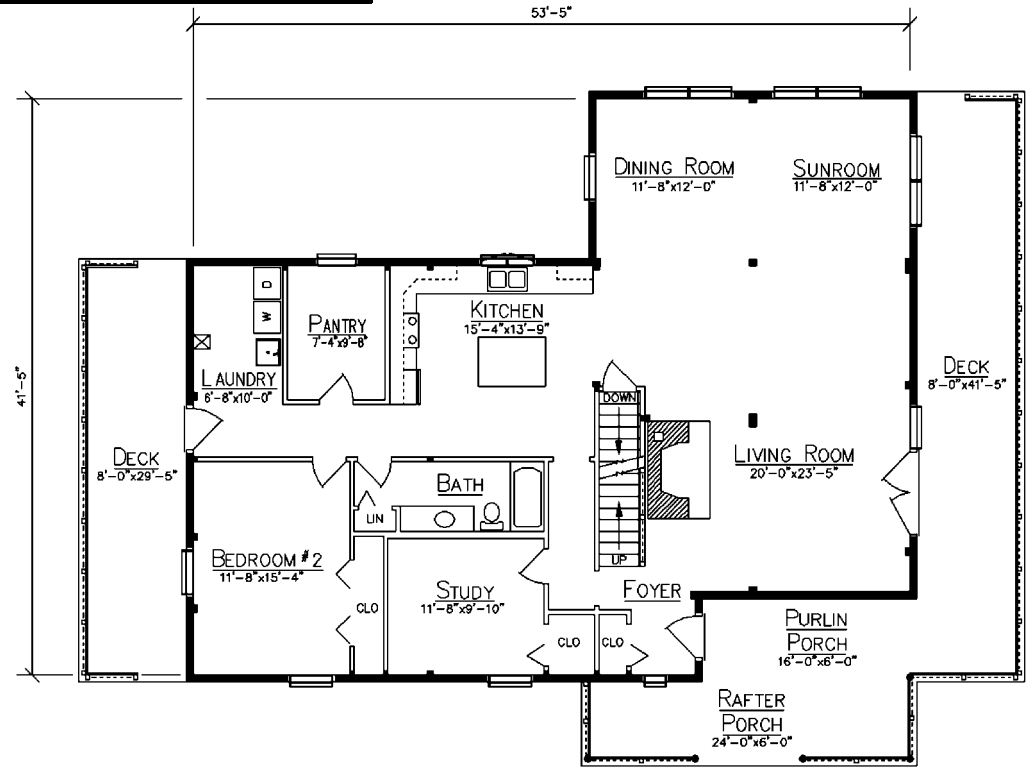
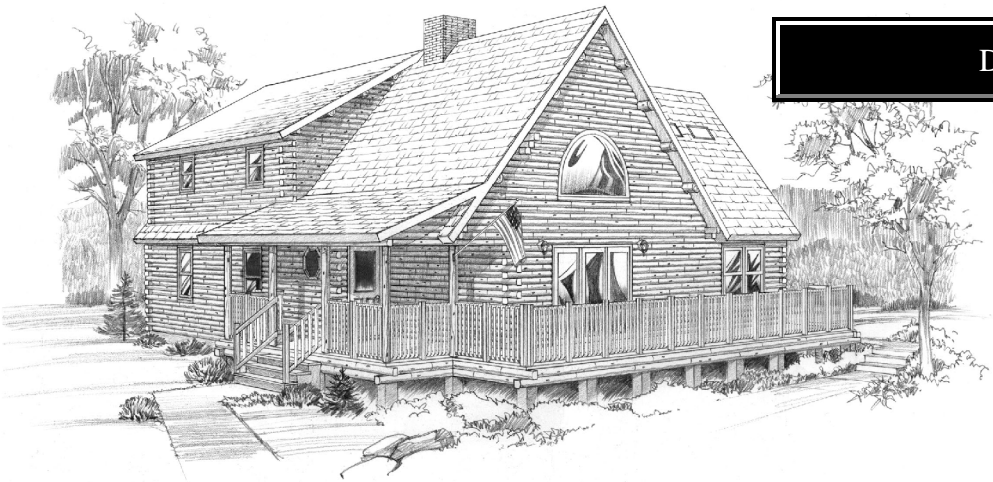
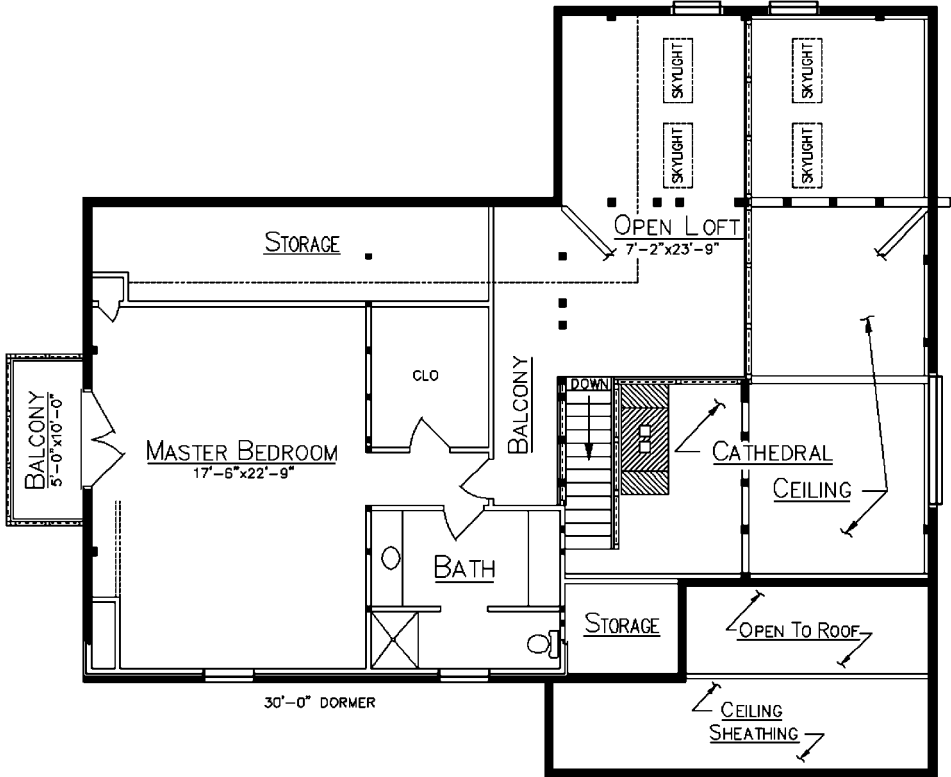


# DARLINGTON



FLOOR PLAN



*First Floor*  
 1756 Sq. Ft.  
*Loft*  
 910 Sq. Ft.  
  
 2 Bedrooms  
 2 Baths

*Since 1923*  
**Ward**  
**CEDAR LOG HOMES**  
 Log, Hybrid & Timber Homes  
*Our past. Your future.*

P.O. Box 72  
 Houlton, ME 04730  
 800-341-1566  
[www.wardcedarloghomes.com](http://www.wardcedarloghomes.com)